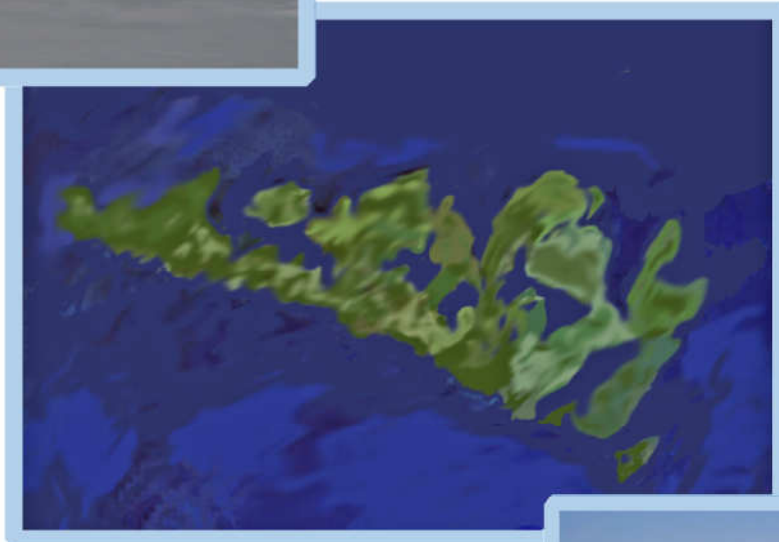


# MANITOULIN ISLAND TOURIST INFORMATION PACKAGE



PRODUCED BY  
THE MANITOULIN CHAMBER OF COMMERCE



AS PART OF A PROGRAM PARTIALLY  
FUNDED BY FEDNOR AND NOHFC

Canada FedNor 

# Accommodations

# Hotels and Motels

Town	Hotel / Motel	Address	Phone (705)
Gore Bay	Gordon's Lodge	Gore Bay	282-2342
Gore Bay	The Queen's Inn	19 Water Street	282-0665
Kagawong	Evergreen Resort	11059-A Hwy 540	282-2616
Little Current	Anchor Inn	1 Water Street	368-2023
Little Current	Bridgeway Motel	Meredith Street	368-2230
Little Current	Hawberry Motel	36 Meredith Street	368-3388
Little Current	Wagon Wheel Motel	18 Walcot Street	368-3243
Little Current	The Shaftesbury Inn	19 Robinson St	368-1945
Little Current	Sunset Motel & Cottages	7 Red Mill Road	368-2186
Manitowaning	Wayside Motel	15462 Hwy 6	859-3515
Meldrum Bay	Meldrum Bay Inn	25959 Hwy 540	283-3190
Meldrum Bay	Whitesea's Cottages, Charter & Marina	Hwy 540	283-3450
Mindemoya	Manitoulin Inn	Hwy 551	377-5500
Mindemoya	Mindemoya Motel	Hwy 542	377-4779
Providence Bay	Huron Sands Motel	Hwy 551	377-4616
Sheguiandah	Paradise Motel	10844 Hwy 6	368-2008
South Baymouth	Buckhorn Motel	Hwy 6	859-3635
South Baymouth	Huron Motor Lodge	Hwy 6	859-3131
South Baymouth	Wigwam Gift Shoppe & Motel	Hwy 6	859-3646
Tehkummah	Travelers Inn Motel	364 Hwy 542	859-2220

The information in this directory has been gathered and carefully compiled in such a way as to ensure maximum accuracy. The Manitoulin Chamber of Commerce cannot, and does not, guarantee the accuracy of any information furnished to them nor the complete absence of errors and omissions; hence, no responsibility for the same can be, nor is assumed. The Manitoulin Chamber of Commerce feels that every effort has been taken to ensure that the information presented in this directory is correct.

Updated May, 2007

# Bed & Breakfasts

Town	B&B	Address	Phone (705)
Gore Bay	Carolyn's Guest House	Gore Bay	282-1089
Gore Bay	Cornerstone B & B	Hwy 540 B	282-2741
Gore Bay	Emery Road B & B	431 Emery Road	282-2228
Gore Bay	The Garden Path B & B	69 Meredith Street	282-0988
Gore Bay	The Queen's Inn B & B	19 Water Street	282-0665
Gore Bay	Thorburn House B & B	1 Thorburn & Boron St.	282-2253
Gore Bay	Woestenenk B & B	Indian Point Bridge Hwy 540	282-2424
Little Current	The Waterlot B & B	62 Water Street E	368-3114
Little Current	Westview B & B	466 White's Point Road	368-1577
Little Current	White's Point B & B	522 White's Point Road	368-2803
Little Current	Woods & Waves B & B	55 Rocky Mountain Way	368-3337
Mindemoya	MacDougall B & B	164 Coventry Road	377-4739
Mindemoya	Norma's B & B	Elliot Road	377-5784
Mindemoya	Rockville Inn	Albert Rd. R.R. 1	377-4923
Providence Bay	Red Rooster Inn	5382 Hwy 551	377-7114
Sheguiandah	The Garlic Patch B & B	Old Hwy 68, just off Hwy 6	368-2887
Sheguiandah	Island Oaks B & B	10644 Hwy 6	368-2220
South Baymouth	Southbay Guesthouse	15 Given Road	859-2363
Spring Bay	Blue Bird Bed & Breakfast	1655 Monument Rd	377-6644
Spring Bay	Osprey Nest B & B	R.R. 2, 11585 Hwy 542	691-0915
Tehkummah	Gordon's Park B & B	18777 Hwy 6	859-2470
Tehkummah	Happy Acres B & B	19635 Hwy 6	859-3453
Tehkummah	Tehkummah Tipi	Hwy 542 A off Hwy 540	859-2621
Wikwemikong	Medora's Place	353 Beach Road	859-2638
Wikwemikong	En-Dye Inn B & B	203 Kabonie Road	859-2955

The information in this directory has been gathered and carefully compiled in such a way as to ensure maximum accuracy. The Manitoulin Chamber of Commerce cannot, and does not, guarantee the accuracy of any information furnished to them nor the complete absence of errors and omissions; hence, no responsibility for the same can be, nor is assumed. The Manitoulin Chamber of Commerce feels that every effort has been taken to ensure that the information presented in this directory is correct.

Updated May, 2007

# Camping, Tent & Trailer

Town	Site	Address	Phone (705)
Evansville	Lake Wolsey Obejewung Park	225 Wolsey Lake	282-2174
Honora Bay	Silver Birches Campground	Honora Bay Road	368-2669
Kagawong	Mike's Park Resort	9365 Hwy 540	282-2745
Kagawong	Norm's Ten & Trailer Park	1125 Lakeshore Road	282-2827
Little Current	Endaa-aang Tourism	13 Hill Street	368-0548
Manitowaning	L & J Tent & Trailer Park	New England Road	859-2883
Manitowaning	Holiday Haven	152 Holiday Haven Road	859-3550
Manitowaning	Uncle Steve's Park & Cabins	24 Bragmore Bay Lane	859-3488
M'Chigeeng	M'Chigeeng Tent & Trailer Park	5950 Hwy 540	377-4987
Mindemoya	Idyll Glen Park	Mindemoya Lake	377-4095
Mindemoya	Mindemoya Court Campground	Ketchankookem Trail	377-5778
Providence Bay	Providence Bay Park	5466 Hwy 551	377-4650
Providence Bay	Santa Maria Trailer Resort	Square Bay Road	377-5870
Sandfield	Watson's Camp	R.R. 3	859-3347
Sheguiandah	Batman's Cottages, Tent & Trailer Park	11408 Hwy 6	368-2180
Sheguiandah	Green Acres Tent & Trailer Park	Hwy 6	368-2428
Sheguiandah	White Haven Fishing Resort	78 Mill Road	368-2554
South Baymouth	John Budd Memorial Park	Hwy 6	
South Baymouth	South Bay Resort	21214 Hwy 6	859-3106
Spring Bay	Fred's Camp	72 Fred's Camp Road	377-4512
Spring Bay	Mac's Camp	720 Perivale Road	377-4537
Spring Bay	Santa Maria Trailer Resort & Cottages	Square Bay Road	377-5870
Spring Bay	Stanley Park Campgrounds	1702 Monument Road	377-4661
Little Current	Endaa-aang Tourism	R.R. 1, Aundeck Omni Kaning	368-2228
Tehkummah	Gordon's Park	18777 Hwy 6	859-2470

The information in this directory has been gathered and carefully compiled in such a way as to ensure maximum accuracy. The Manitoulin Chamber of Commerce cannot, and does not, guarantee the accuracy of any information furnished to them nor the complete absence of errors and omissions; hence, no responsibility for the same can be, nor is assumed. The Manitoulin Chamber of Commerce feels that every effort has been taken to ensure that the information presented in this directory is correct.

Updated May, 2007

# Lodges, Cottages & Cabins

Town	Accommodation	Address	Phone (705)
Big Lake	Coventry Shores	32 Coventry Road	377-4598
Big Lake	Mountain View Resort	5187 Nighswander Road	377-4089
Evansville	Northernaire Lodge	15810 Hwy 540, R.R. 1	282-2642
Evansville	Twilight Isle	Hwy 540	282-2871
Gore Bay	Evergreen Resort	11059A Hwy 540	282-2616
Gore Bay	Gordon's Lodge	Town of Gore Bay	282-2342
Honora Bay	Silver Birches Resort	Honora Bay Road	368-2669
Kagawong	Hide Away Lodge	Newburn Road off Hwy 540	282-8882
Kagawong	Lakeview Resort	R.R. 1, 879 Lakeshore Rd.	282-2888
Kagawong	Lake Kagawong Family Cabins	423 Lake Shore Road	282-0989
Kagawong	Lake Wolsey Cabins	R.R. 2	282-2701
Kagawong	Mike's Park Resort	9365 Hwy 540	282-2745
Kagawong	Norm's Resort	1125 Lakeshore Road	282-2827
Kagawong	Sunset Bay Resort	387 Lakeshore Road	282-3100
Kagawong	Viva Villa	497 Lakeshore Road	282-2896
Little Current	Birch Island Lodge	Hwy 6 – Sunshine Alley Rd.	1-888-228-1823
Little Current	Endaa-aang Tourism	R.R. 1, Aundeck Omni Kaning	368-2228
Little Current	Grandview Cottages	384 North Channel Dr.	368-2310
Little Current	Sunset Motel & Cottages	7 Red Mill Road	368-2186
Manitowaning	Bass Creek Resort	26 Bass Creek Road	859-3442
Manitowaning	Black Rock Resort	35 Leask Lane	859-3262
Manitowaning	Holiday Haven Resort	152 Holiday Haven Road	85-3550
Manitowaning	Uncle Steve's Park & Cabins	45 Bragmore Bay Lane	859-3488
Meldrum Bay	Meldrum Bay Outfitters	25959 Hwy 540	283-4133
Meldrum Bay	Whitesea Resort & Charters	Hwy 540	283-3450
Mindemoya	Camp Mary Anne Resort	Camp Mary Anne Road	377-4972
Mindemoya	Cedar Grove Cottages	544 Ketchankookem Trail	377-4962
Mindemoya	Cozy Cove Cottages	413 Lakeshore Road	377-4533
Mindemoya	Green Bay Lodge	Rockville Road, Site 6	368-2848
Mindemoya	Maple Grove Cottages	77 Digby Side Road	377-4916
Mindemoya	Maple Spring Cottages	113 Ketchankookem Trail	377-4075
Mindemoya	Mindemoya Court Cottages	604 Ketchankookem Trail	377-5778
Mindemoya	Morrow's Cottages	Morrow's Road	377-4941
Mindemoya	Pirate's Cove	399 Ketchankookem Trail	377-4979
Mindemoya	Timberlane Rustic Lodges	249 Mill Road	377-4078
Providence Bay	Providence Bay Cottages	Hwy 551	377-4213
Providence Bay	Sullivan's Cottages	Hwy 551	377-4849
Sandfield	Turtle Creek Lodge	Off Hwy 542, East Road	377-4072
Sandfield	Watson's Camp Resort	R.R. 3	859-3347
Sheguiandah	Batman's Cottages, T&T Park	11408 Hwy 6	368-2180
Sheguiandah	Red Lodge Resort	R.R. 1, Bidwell Road	368-3843
Sheguiandah	Sheguiandah Bay Village	Sheguiandah	368-3424
Sheguiandah	Wee Point Resort	1819 Bidwell Road	859-3129
South Baymouth	South Bay Resort	21214 Hwy 6	859-3106
Spring Bay	Dawson's Resort	R.R. 1	377-4515
Spring Bay	Fred's Camp	72 Fred's Camp Road	377-4512
Spring Bay	Mac's Camp	720 Perivale Road	377-4537
Spring Bay	Oakes Cottages & Camping	732 Monument Road	377-4638
Spring Bay	Rockgarden Terrace Resort	1358 Monument Road	377-4652
Spring Bay	Santa Maria Resort & Cottages	Square Bay Road	377-5870

# Services

# Restaurants

Town	Restaurant	Address	Phone (705)
Evansville	Gateway Grill	R.R. 1, 14957 Hwy 540	282-6248
Evansville	Northernaire Lodge	R.R. 1, 15810 Hwy 540	282-2642
Gore Bay	B&J's Restaurant	55 Meredith Street	282-3320
Gore Bay	Campbell's Drive-In Restaurant	Hwy 540	282-2185
Gore Bay	Evergreen Resort	R.R. 1, 11059-A Hwy 540	282-2616
Gore Bay	Gordon's Lodge	Gore Bay	282-2342
Gore Bay	Pizzaroma	50 Water Street	282-9999
Gore Bay	Rocky Raccoon Café	20 Water Street	282-8111
Gore Bay	Twin Bluffs Bar & Grill	6 Eleanor Street	282-2000
Little Current	Anchor Inn	Water Street	368-2023
Little Current	China City Restaurant	42 Meredith Street E	368-1234
Little Current	Garry's Family Restaurant	Vankoughnet E	368-3370
Little Current	Loco Beanz Coffee House	7 Water Street	368-2261
Little Current	Old English Pantry	13 Water Street	368-3341
Little Current	One Stop Island Pizza	41 Walcot Street	368-3424
Little Current	The Shaftesbury Inn	19 Robinson Street	368-1945
Little Current	Three Cows & A Cone	Meredith Street E	368-3524
Manitowaning	Black Rock Resort	R.R. 2-M	859-3262
Manitowaning	Muskie Widows Tavern	38 Queen Street	859-1800
Manitowaning	Rainbow Ridge Golf Course	26 Clover Valle Road	859-2990
Manitowaning	Van's Drive In	Arthur Street	859-3119
M'Chigeeng	Abby's Dining Lounge	654 Crosshill Rd	377 -4028
M'Chigeeng	Gina's Bakery and Restaurant	5905 Hwy 540	377-7001
M'Chigeeng	JB's Pizza & Sports Lounge	41 Bay Street	377-5065
M'Chigeeng	Maggie's Café	Hwy 540	377-5240
M'Chigeeng	Seasons Family Restaurant	72 Hwy 551	377-4344
Meldrum Bay	Meldrum Bay Inn	25959 Hwy 540	283-3190
Mindemoya	Busy Bee Take-out	Hwy 551	377-5302
Mindemoya	Island Pub	6089 Hwy 542	377-4250
Mindemoya	Mum's Restaurant & Bakery	2215 Hwy 551	377-4311
Mindemoya	Route 50	2236 Hwy 55	377-7040
Mindemoya	Tea Mixes & Chocolate Fixes	280 Hill Rd	377-4095
Providence Bay	Lake Huron Fish & Chips	20 McNevin Street	377-4500
Providence Bay	The School House Restaurant	46 McNevin Street	377-4055
Sheguiandah	Green Acres Restaurant	Hwy 6	368-2428
Sheguiandah	Red Lodge Resort	R.R. 1, Bidwell Road	368-3843
South Baymouth	Carol and Earl's Restaurant	21306 Hwy. 6	859-3000
South Baymouth	Family Brown Restaurant	Hwy 6	859-3481
South Baymouth	Island Fish and Chips	33 Given St.	859-3411
South Baymouth	Pierside Restaurant	Across from Ferry Terminal	859-3233
South Baymouth	Tee-pee Take-out	Across from Ferry Terminal	859-3646
Spring Bay	Rockgarden Terrace Resort	R.R.1	377-4652
Tehkummah	Garden's Gate Family Restaurant	Hwy 542	859-2088
Tehkummah	Royal Michael's Bay Golf & Country Club	8 Michael's Bay Road	859-1111
Wikwemikong	Patsy's Family Restaurant	Wikwemikong Road	859-2075
Wikwemikong	The Coffee Shop – Andy's	Wikwemikong	859-2193
Wikwemikong	Brook's n' Dave's Family Restaurant	Wikwemikong Road	859-2760

# SERVICES

## IMPORTANT PHONE NUMBERS

Manitoulin Health Centre, Little Current .....369-2300  
Manitoulin Health Centre, Mindemoya .....377-5311  
Gore Bay Medical Centre .....282-2262  
O.P.P. Central Dispatch .....1-888-310-1122  
Fire, Ambulance & life threatening situations .....911

## BANKS ON MANITOULIN

### Bank of Montreal

Gore Bay – 705-282-2490  
Little Current – 705-368-2260  
Manitowaning – 705-859-3112  
Mindemoya – 705-377-5391

### TD Canada Trust

Little Current – 705-368-3110

### Espanola & District Credit Union

Gore Bay – 705-282-2511  
Little Current – 705-368-3222

### Agency Royal Bank

Wikwemikong – 705-282-2490

## MANITOULIN LAUNDROMATS

Econo Wash – Meredith Street, Gore Bay  
D&A Laundromats – 1 Water Street, Little Current – (368-9968)  
Blair's Cash & Carry – Hwy 541, M'Chigeeng – (377-4937)  
Wilson's Corner Store – Corner of King & Young, Mindemoya – (377-4010)  
Andy's Wiky Wash N Dry – Wikwemikong Way – (859-3788)  
Karen's Coffeemat – Mini Mall, Wikwemikong – (859-2020)

The information in this directory has been gathered and carefully compiled in such a way as to ensure maximum accuracy. The Manitoulin Chamber of Commerce cannot, and does not, guarantee the accuracy of any information furnished to them nor the complete absence of errors and omissions; hence, no responsibility for the same can be, nor is assumed. The Manitoulin Chamber of Commerce feels that every effort has been taken to ensure that the information presented in this directory is correct.

Updated June, 2007

# HELPFUL INFORMATION

## **Manitoulin Chamber of Commerce**

6062 Hwy 542, Mindemoya  
377-7501 or 1-800-698-6681

### **Manitoulin Tourism Association**

100 Meredith East, Little Current  
368-3021

Visit their Information & Welcoming Center just before the swing bridge in Little Current for all of your Tourism needs and inquiries about Manitoulin Island.

### **Service Ontario – Government Information Centre**

35 Meredith, Gore Bay  
(282-2043)

One stop for government information. They also handle the replacement of lost Driver's Licences, Outdoor Cards, and other wallet information. It is has a public internet site.

### **LaCloche Manitoulin Business Assistance Corporation**

30 Meredith, Gore Bay  
(282-3215 or 1-800-461-5131)

LAMBAC is a community-based non-profit corporation which has worked hard to help the LaCloche Manitoulin region prosper. LAMBAC serves the communities on Highway 17 from Nairn Centre to Walford, those on Highway 6 through Espanola down to and including all of Manitoulin Island, and the town of Killarney.

### **Manitoulin Branding Association**

(368-3021)

The Manitoulin Branding Association is a non-profit co-operative of Manitoulin Island producers and retailers promoting their locally-made products as well as the Manitoulin Island economy as a whole. The Manitoulin Branding Association includes a wide variety of products that reflect the island's diverse economy, from crafts, clothing and food to art and even construction materials.

### **Manitoulin Living**

(859-3768 or 1-800-368-2933) [www.manitoulinliving.com](http://www.manitoulinliving.com)

Manitoulin Living is an initiative designed to attract new residents to Manitoulin Island and provide information, as quite often people who visit the Island develop lifelong relationships with the area. They have a private partner membership list of over twenty members, including real estate firms, property developers, building contractors, local retail businesses, resorts and lodges.

### **Manitoulin Farmers' Market Association**

[www.manitoulinfarmersmarket.com](http://www.manitoulinfarmersmarket.com)

The Manitoulin Farmers' Market is a collection of local producers. It is open from the May long weekend until Thanksgiving, and is held three times a week at different locations on the Island.

On Tuesdays, the Market is held at the Rec Center in Little Current. (282-6255)

On Fridays, the Market is held at the Arena in Gore Bay. (282-0274)

And on Saturdays, the Market is held at the Arena in Mindemoya. (377-4471)

The information in this directory has been gathered and carefully compiled in such a way as to ensure maximum accuracy. The Manitoulin Chamber of Commerce cannot, and does not, guarantee the accuracy of any information furnished to them nor the complete absence of errors and omissions; hence, no responsibility for the same can be, nor is assumed. The Manitoulin Chamber of Commerce feels that every effort has been taken to ensure that the information presented in this directory is correct.

# Distance Chart

(in Kilometers)

642	614	592	586	570	567	554	538	550	567	561	565	545	517	508	455	695	385	345	Toronto
367	339	317	311	295	290	279	263	255	292	286	290	268	142	233	180	420	110		Killarney
257	229	207	201	185	182	169	153	165	182	176	180	158	132	123	70	310			Sudbury
427	399	377	371	355	352	339	323	335	352	346	355	328	302	293	240				Sault Ste. Marie
187	159	137	131	115	112	99	83	95	112	106	115	88	62	53					Espanola
134	106	84	78	62	59	46	30	42	59	53	62	35	9						Little Current
189	160	138	132	116	89	100	84	72	48	42	51	24							Sheguiandah
165	136	114	108	92	65	76	60	48	24	18	27								Manitowaning
167	138	116	110	94	67	78	62	50	26	20									South Baymouth
147	118	96	90	74	47	58	42	30	6										Tehkummah
141	112	90	84	68	41	52	36	24											Sandfield
117	88	66	60	44	17	28	12												Mindemoya
103	74	52	46	32	29	16													M'Chigeeng
91	62	40	34	18	45														Kagawong
107	78	56	50	27															Spring Bay
73	44	22	16																Gore Bay
57	28	6																	Evansville
51	22																		Elizabeth Bay
29																			Silver Water
																			Meldrum Bay

	From Espanola	From Little Current
Meldrum Bay	2 hrs	1.45 hrs
Silver Water	1.45 hrs	1.10 hrs
Elizabeth Bay	1.30 hrs	1.15 hrs
Evansville	1.25	50 mins
Gore Bay	1.10 hrs	45 mins
Spring Bay	1.10 hrs	35 mins
Kagawong	1 hr	30 mins
M'Chigeeng	50 mins	20 mins
Mindemoya	1 hr	25 mins
Sandfield	1.10 hrs	35 mins
Tehkummah	1.05 hrs	35 mins
South Baymouth	1.30 hrs	40 mins
Manitowaning	55 mins	20 mins
Sheguiandah	45 mins	10 mins
Little Current	35 mins	—————

# LIBRARIES

## Assiginack Public Library

25 Spragge St., Manitowaning

(705)-859-2110

Hours of Operation

**January to June and September to December:**

Tuesday: 10:00am - noon, 3:00pm – 5:30pm, 7:00pm - 9:00pm

Thursday: 10:00am - noon, 3:00pm – 5:30pm, 7:00pm - 9:00pm

Saturday: 10:00am - noon, 2:00pm - 5:00pm

**July and August**

Tuesday: 10:00am - noon, 3:00pm – 5:30pm, 7:00pm - 9:00pm

Wednesday: 10:00am - noon, 2:00pm - 5:00pm

Thursday: 10:00am - noon, 3:00pm – 5:30pm, 7:00pm - 9:00pm

Friday: 10:00am - noon, 2:00pm - 6:00pm

Saturday: 10:00am - noon, 1:00pm – 5:00pm

## Gore Bay Library

Gore Bay

(705)-282-2221

Hours of Operation

**Summer:**

Tuesday: 9:00am - 1:00pm, 2:00pm - 5:00pm

Wednesday: 9:00am - 1:00pm, 2:00pm - 5:00pm

Thursday: 9:00am - 1:00pm, 2:00- 7:00pm

Friday: 9:00am - 1:00pm, 2:00pm - 7:00pm

Saturday: 9:00am - 1:00pm, 2:00pm - 5:00pm

## Billings & Allan East Public Library

Kagawong

(705)-282-2944

Hours of Operation

Monday: 7:00am - 9:00pm

Thursday: 4:00pm - 8:00pm

Saturday: 10:00am - 1:00pm

## Mindemoya Public Library

6020 Hwy 542, Mindemoya

(705)-377-5334

Hours of Operation

**October to May**

Tuesday: 10:00am - 5:00pm

Wednesday: 10:00am - 5:00pm

Thursday: 10:00am - 5:00pm

Saturday: 11:00am - 1:00pm

**Summer:**

Monday to Wednesday: 10:00am- 4:00pm

Thursday: 10:00am-4:00pm, 6:30pm-9:00pm

## The N.E.M.I. Public Library

50 Meredith St. W, Little Current

(705)-368-2444

Hours of Operation

**July to August:**

Tuesday: 10:00am - 8:00pm

Friday: Noon - 5:00pm

Saturday: Noon - 4:00pm

**September to June:**

Tuesday: 10:00am - 8:00pm

Wednesday: 10:00am - 8:00pm

Thursday: 10:00am - 8:00pm

Friday: Noon - 5:00pm

Saturday: Noon - 4:00pm

## Providence Bay Library

11 Mutchmor St., Providence Bay

(705)-377-4503

Hours of Operation

Wednesday: 1:00pm - 3:30pm

Friday: 1:00pm - 4:30pm

## Sheshegwaning First Nation Library

Sheshegwaning School, Sheshegwaning

(705)-283-3014

Hours of Operation

Monday: 1:00pm - 4:00pm

Tuesday: 1:00pm - 4:00pm, 5:30pm - 8:00pm

Wednesday: 1:00pm - 4:00pm, 5:30pm - 8:00pm

Thursday: 1:00pm - 4:00pm

Friday: 10:00am - 1:00pm

## Tehkummah Public Library

Tehkummah

(705)-859-3301

Hours of Operation

**Summer:**

Saturdays

## Wikwemikong Pubic Library

34 Henry St., High school, Providence Bay

(705)-859-2692

Hours of Operation

Monday to Friday: 8:30am - 4:30pm

# CHURCHES OF MANITOULIN ISLAND

## Anglican

All Saints  
Gore Bay  
Service: 11:00 am

Little Current Anglican  
Little Current – (368-3063)  
Service: 9:00 am

St. Francis of Assisi  
6201 Hwy 542 Mindemoya – (377-4480)  
Service: 11:00 am

St. John's  
Kagawong  
Service: 9:00 am

St. Paul's  
Manitowaning  
Service: 9:00 am

St. Peter's  
Silver Water – (282-3030)  
Service: 7:30 pm

## Community of Christ

Little Current Community of Christ Church  
Little Current – (368-1822)  
Service: 11:00 am

Providence Bay Community of Christ Church  
80 McNevin St., Providence Bay – (368-2603)  
Service: 11:00 am

## Catholic

Birch Island  
Service: 11:00 am

Buzwah  
Service: 4:00 pm

Immaculate Heart of Mary  
Gore Bay  
Service: 7:00pm

Kaboni  
Service: 9:00 am

St. Bernard's  
Little Current  
Service: 9:00 am

Immaculate Conception  
M'Chigeeng  
Service: 10:30 am

St. Joseph's  
Sheshegwaning  
Service: 1:30 pm  
(1<sup>st</sup> & 3<sup>rd</sup> Sunday of the month only)

South Bay  
Service: 1:00 pm

Our Lady of Canada  
Mindemoya  
Service: 7:00pm

St. Romuald's  
Wikwemikong  
Service: 11:00am

The information in this directory has been gathered and carefully compiled in such a way as to ensure maximum accuracy. The Manitoulin Chamber of Commerce cannot, and does not, guarantee the accuracy of any information furnished to them nor the complete absence of errors and omissions; hence, no responsibility for the same can be, nor is assumed. The Manitoulin Chamber of Commerce feels that every effort has been taken to ensure that the information presented in this directory is correct.

Updated June, 2007

## **Church of Christ**

Church of Christ  
Ice Lake – (282-8531)  
Service: 9:45 am

## **Jesus Christ of Latter Day Saints**

Church of Jesus Christ of Latter Day Saints  
9050 Hwy 6, Little Current – (859-2333)  
Service: 11:00 am

## **Gospel Fellowship**

Aundeck Omni Kaning – (368-2880)

M'Chigeeng – (377-4883)

Manitowaning – (859-2596)

## **Missionary-Evangelical**

Grace Bible  
Little Current – (368-3208/368-1563)  
Service: 11:00 am

Missionary Church  
Mindemoya – (377-7255)  
Service: 11:00 am

Salem Evangelical Missionary Church  
Spring Bay – (377-4480)  
Service: 11:00am

## **Pentecostal**

Gateway to Life Church  
Little Current – (368-3739)  
Service: 11:00 am

Spring Bay – (377-5060)  
Service: 10:30 am, 6:00 pm

Tehkummah – (859-3224)  
Service: 10:30 am, 6:30 pm

## **New Life Fellowship**

Wikwemikong Hub Centre – (859-2465)  
Service: 10:30 am

## **United**

Lyons Memorial  
Gore Bay – (282-2011)  
Service: 11:00 am

Little Current – (368-0835)  
Service: 10:00 am

Knox  
Manitowaning – (859-3257)  
Service: 10:00 am

Fairview  
Tehkummah – (859-3257)  
Service: 11:30 am  
(Alternates with St. Andrews by the Sea)

St. Andrews by the Sea  
South Baymouth – (859-3257)  
Service 11:30 am  
(Alternates with Fairview)

Mindemoya – (377-6655)  
Service: 10:00 am

Providence Bay – (377-6655)  
Service: 11:30 am

St. Paul's on the Hill  
Kagawong – (377-6655)  
Service: 1:30 pm

St. Andrew's  
Meldrum Bay – (283-3068/282-8265)  
Service: 9:30 am

St. Andrews  
Silver Water – (283-3068/282-8265)  
Service: 11:00 am

Elizabeth Bay – (283-3068/282-8265)  
Service: 1:30 pm

The information in this directory has been gathered and carefully compiled in such a way as to ensure maximum accuracy. The Manitoulin Chamber of Commerce cannot, and does not, guarantee the accuracy of any information furnished to them nor the complete absence of errors and omissions; hence, no responsibility for the same can be, nor is assumed. The Manitoulin Chamber of Commerce feels that every effort has been taken to ensure that the information presented in this directory is correct.

**Updated June, 2007**

# Ports of Call on Manitoulin Island

## Gore Bay

Gore Bay Marina (282-2906) is a full service marina and has dockage for over 100, with many of the spaces reserved for visitors. Customs clearance is also available.

## Kagawong

Kagawong has a government dock that can accommodate large vessels and has dockage for 30 on finger docks, as well the Kagawong Basin (282-2611) at the Old Mill Lagoon for small crafts. There is also Northern Marina (282-3330).

## Little Current

The town dock has about 50 slips and is located right along the main downtown street. There is also Spider Bay Marina (368-3148), which offers dockage for over 100 slips. Other marine facilities include the Harbor Vue Marina (368-3212), Boyle Marine (368-2239), and Little Wally's Dock Service (368-2370).

## Manitowaning

The Bay Street Marina (859-3700) is a full service marina and has dockage for around 35. Services are available for fuel, repairs, and marine equipment.



## Meldrum Bay

Meldrum Bay Marina (283-1313) is a full service marina with dockage for 40. It is the first port for clearing Customs on the North Channel's south shore. There is also a marina in McRae Cove.

## Providence Bay

The Providence Bay Marina Building (377-7225) has showers and washrooms available. The dock keeps some space open for boaters visiting the bay.

## South Baymouth

Accessed by both South Bay and Lake Huron, the South Baymouth marina is a full service marina, with dockage for about 60 slips.

## Wikwemikong

The Wikwemikong Bay Marina (859-2850) is located at Smith Bay. Boaters are advised to call to make sure that there is a space available



# Attractions

Attractions

# 2007 POW WOWS

June 2<sup>nd</sup> – 3<sup>rd</sup>

Aundeck Omning Kaning First Nation  
Annual Traditional Pow Wow

June 16<sup>th</sup> – 17<sup>th</sup>

Wikwemikong Unceded Indian Reserve  
Traditional Pow Wow

June 23<sup>rd</sup> – 24<sup>th</sup>

Sheshegwaning First Nation Traditional  
Pow Wow

July 7<sup>th</sup> – 8<sup>th</sup>

Sheguiandah First Nation Annual  
Traditional Pow Wow

July 14<sup>th</sup> – 15<sup>th</sup>

Sagamok Anishnawbek Annual  
Traditional Pow Wow



August 4<sup>th</sup> – 6<sup>th</sup>

Wikwemikong Unceded Indian Reserve  
Annual Cultural Festival and Pow Wow

August 18<sup>th</sup> – 19<sup>th</sup>

Whitefish River First Nation Annual  
Traditional Pow Wow

August 25<sup>th</sup> – 26<sup>th</sup>

Zhiibaahaasing First nation Traditional  
Pow Wow

September 1<sup>st</sup> – 2<sup>nd</sup>

M'Chigeeng First Nation Annual  
Traditional Pow Wow

The information in this directory has been gathered and carefully compiled in such a way as to ensure maximum accuracy. The Manitoulin Chamber of Commerce cannot, and does not, guarantee the accuracy of any information furnished to them nor the complete absence of errors and omissions; hence, no responsibility for the same can be, nor is assumed. The Manitoulin Chamber of Commerce feels that every effort has been taken to ensure that the information presented in this directory is correct.

Updated June, 2007

# Scenic Lookouts

**Cup and Saucer Trail** – Located at the intersection of Highway 540 and Bidwell Road, between Honora Bay and West Bay.

**Harold Noble Memorial East Bluff** – Located at East Bluff in Gore Bay, down from the Harold Noble Memorial Park. It looks over the bay and town.

**Hindman Park Lookout** – Located at East Bluff in Gore Bay, about a mile down from the Harold Noble Memorial Park.

**Indian Point** – Turn left off of Highway 540 onto Indian Point Road, just past Lake Wolsey and before Evansville.

**Kagawong** – There are four lookouts in Kagawong, located on Rainbow Heights Road, Hide Away Road, Lebar Road, and just down the road at the Range A Side Road.

**McLean's Mountain** – Located on Highway 540, just outside of Little Current.

**Ten-Mile Point** – Located on Highway 6, between Little Current and Manitowaning.

The information in this guide has been gathered and carefully compiled in such a way as to ensure maximum accuracy. The Manitoulin Chamber of Commerce cannot, and does not, guarantee the accuracy of any information furnished to them nor the complete absence of errors and omissions; hence, no responsibility for the same can be, nor is assumed. The Manitoulin Chamber of Commerce feels that every effort has been taken to ensure that the information presented in this guide is correct.

**Manitoulin Chamber  
of Commerce**

# Museums on Manitoulin

## **Gore Bay Museum**

### **Gore Bay**

The District Jail and jail keeper's home until 1945, it is one of the few remaining jails which retains many of its original features. The museum contains a collection of early settler artifacts and relics of maritime history and ship wrecks, as well as much more.

## **Transportation/Communication Museum**

### **Kagawong**

Situated by the former pulp mill and the local harbour, it brings details the busy shipping and fishing port of a century ago. Inside the museum is a switchboard, sleds, photos and much more.

## **Assinack Museum Complex**

### **Manitowaning**

Recently renovated, the museum served as a jail in the mid-1800s, and hosts a blacksmith shop barn, pioneer home, and early schoolhouse. Down at the harbour is the S.S. Norisle Heritage Park, which includes the S.S. Norisle, a 200 ft steamship, Burns Wharf Theatre, and the Roller Mills, a 19<sup>th</sup> Century Grist Mill.

## **Mississagi Lighthouse**

### **Meldrum Bay**

Furnished as it was for the early lighthouse keeper, the original magnifying glass and foghorn are there, along with artifacts believed to be from LaSalle's Griffin.

## **Net Shed Museum**

### **Meldrum Bay**

Situated on the village's main street, in a building formerly used by commercial fishermen to repair their nets, the museum features displays dedicated to the seafaring and fishing history of the region and has a unique variety of fishing and lumbering artifacts.

## **Agricultural Museum**

### **Mindemoya**

Mindemoya resident Jack Seabrook proudly displays his wide collection of pre-war tractors, gas engines, horse drawn equipment, small farm artifacts, and power machinery.

## **Pioneer Museum**

### **Mindemoya**

Discover a wide variety of artifacts related to farming, fishing and lumber in the area. A log home, blacksmith shop, barn, milk processing and butter making equipment, and ice harvesting tools have all been relocated to the museum from the pioneers' farms.

## **Centennial Museum**

### **Sheguiandah**

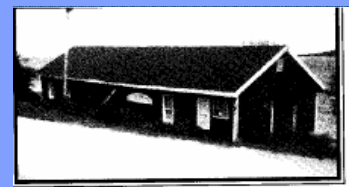
Come and catch a glimpse of the past. The life and times of pioneers are brought to life in the barn, sugar shack, and reconstructed log homes. The museum is home to artifacts from one of Canada's oldest archeological sites, a marine exhibit, weekly activities, and art exhibitions.

## **Little Schoolhouse and Museum**

### **Sheguiandah**

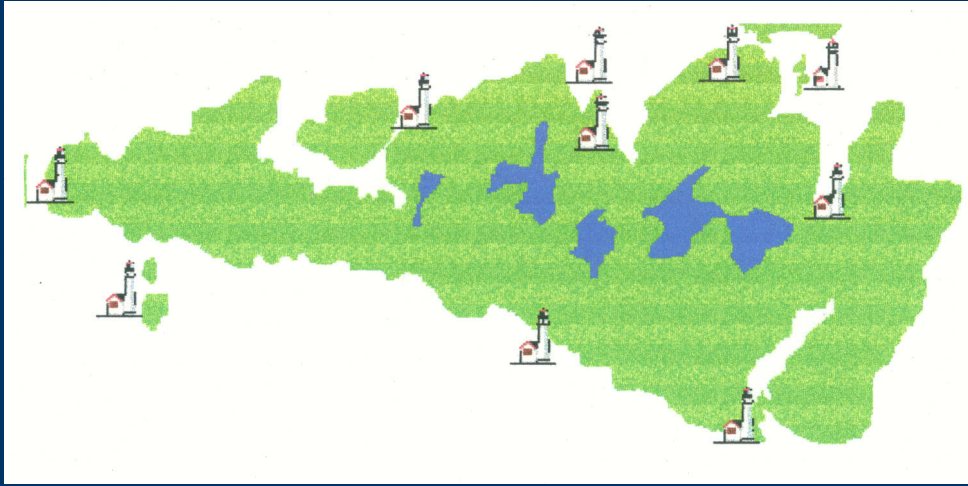
Trace the history of Tehkummah Township, Michael's Bay (one of Ontario's ghost towns), and the development of South Baymouth from a commercial fishing station to a tourist destination and ferry port. The museum complex includes one of the Island's pioneer one room schools.

On Manitoulin Island, we believe that visitors to our museums should experience things first hand. Our museums offer a wide variety of exhibits and activities, and each holds a personality of its own that makes for both a fun and informative visit every time. Travel beautiful Manitoulin and be sure to visit its museums.



Come and visit our history.

# Lighthouses of Manitoulin



Before 1845, there were no lighthouses or buoys on or near Manitoulin Island. It was decided in 1854 that lighthouses needed to be built. The early lighthouses were built out of stone and then later changed to wood. Each lighthouse had a different code for flashes, so by timing the flashes a sailor could tell exactly what lighthouse they were at. Lighthouse keepers were obligated to answer a distress call from the ships in a storm and had to make three attempts to reach the ship before it was considered impossible to get to.



## Cape Robert Lighthouse

The Cape Robert Lighthouse was built in 1185. It was taken down and the lantern is now in Owen Sound. There also used to be a hand pump fog horn. The lighthouse was replaced with a flashing white light that is visible for 12 miles (19.3 km). It is 13 metres (42.7 ft) high. The light is located 45.7 metres (150 ft) inside the low northern extremity of the western entrance point.

## Clapperton Island

There have been 3 wooden lighthouses on Clapperton Island. The first was built in 1873 and put into service in 1874. There was a second light on another point which the keepers also lit. The third lighthouse was built by Bob Beange of Gore Bay, and is still standing today.

## Great Duck Island

The lighthouse is 21.5 metres (70.5 ft) high and is located on the southwest point of the island. It is a white octagonal tower. It was established in 187 and was last altered in 1987. The original lantern was of iron, and was 10 feet in diameter, containing 10 Silverburner lamps with 22 inch reflectors. The glass was 60x30 inches. The new light is white with group flashing and visible for 17 miles (2704 km). There is an air fog diaphone 190 ft southwest of the light. It sounds for 2 ½ seconds and is silent for 27 ½ seconds.

## Gore Bay Range

It is a circular tower with a white day marker that is 266.5 metres (874 ft) from the front. It is 10.1 metres (33 ft) high and was established in 1949. It was last altered in 1988.

## Janet Head Lighthouse

This lighthouse in Gore Bay as built in 1879. It is a white, square, and slightly tapered tower 7.9 metres (25.9 ft) high. There is an attached dwelling and the whole building is set on a stone foundation. The lanterns are polygonal shaped and mounted on a square projecting platform. The name is believed to have come from one of the daughters of Lt. Bayfield, who surveyed Lake Huron in his ship. Recovery between 1822 and 1825. Gore Bay Museum has the keeper's diary books that consisted of keeping track of the weather, wind direction, time of lighting and extinguishing, total time burning, oil used, and remarks. The remarks column was mainly used to describe a bad storm, drowning, mail, supply ships (the first and last of the seasons), or in some cases explain the absence of the light because of good moonlight.

## Little Current

The first lighthouse opened in 1864 and was on the shore downtown where the monument is now. The first keeper was Donald McKenzie and his son William. They operated it until at least 1982.



## Kagawong

The first lighthouse was built on the first dock in 1880. Now, located 100 ft west of the wharf is a white tower, 9.4 metres (30.8 ft) high. It has a red fixed light that can be seen for 13 miles (20.9 km). It was established in 1988 and was last altered in 1988.

## Manitowaning

The lighthouse was established in 1885. It is located on the hill in the town. It is 10.4 metres (34.1 ft) high. It is white, square, and has a green fixed light that is visible for 16 miles (25.7 km). The light as last altered in 1982.

## Narrow Island

The lighthouse was built around 1890. After World War One, the light was changed to battery. In 1982, the Department of Transportation tore the lighthouse down.

## Mississagi Lighthouse

Built in 1873 in Meldrum Bay, it is the oldest lighthouse on Manitoulin Island that is still standing. It is located 17.5 miles from the town of Meldrum Bay. The lighthouse is 12.2 metres (40 ft) high. When built, there was only a trail leading to the lighthouse. Not until 1968 was a road built to the lighthouse. The first light was a coal-oil fired wick type lamp, which required cleaning and filling daily. In 1881, a fog alarm plant which ran on compressed air was installed on the site to serve as further warning to boats to beware of the treacherous reefs and rocky protruding coastline. In 1908, the compressed air fog alarm was replaced with a Diaphone type alarm. In 1970, when hydro was installed in the lighthouse, the light was replaced with an automatic light. The lighthouse is now part of a museum, and is furnished as it was for the lighthouse keepers and family one hundred years ago. It now boasts a restaurant and is open to the public from June till September 1st.

### There are also places that only have a beacon light

- Cape Smith – Wikwemikong
- Little Current North Range – Spider Island
- Picnic Island
- Sheguiandah
- Providence Bay
- Mudge Bay – off of Trudeau Point

## Providence Bay

The Providence Bay Lighthouse is a fixed white light that is visible for 13 miles (20.9 km). It is located on the extremity of Providence Point, the headland on the east side.

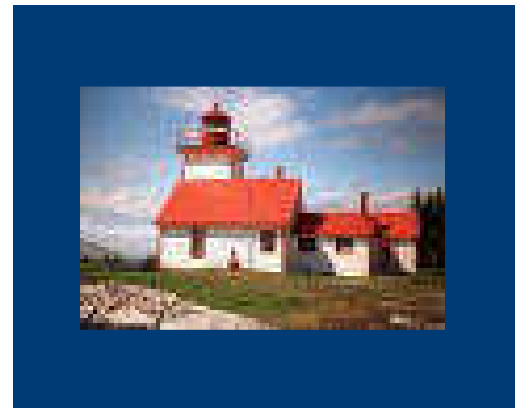
## South Baymouth

One lighthouse is located on the southeast of a small island. It has a green fixed light and is 5.2 metres (17.1 ft) high. It is a white, square building with an orange vertical stripe. It was established in 1898 and was last altered in 1986.

The other lighthouse is 238.6 metres (728.8 ft) from front. It has a green fixed light and is 8.1 metres (26.6 ft) high. It is also a white, square building with an orange vertical stripe. It was established in 1898 and was last altered in 1986.

## Strawberry Island

Located on the northernmost point of the island, it is a white, 12.3 metres (40 ft) high structure with a fixed white light visible for 13 miles (20.9 km). It was established in 1881 and was last altered in 1984. The tower is square and slightly tapered, with an attached dwelling and is set on a stone foundation. A hand fog horn answers signals from vessels.



# Cycling on Manitoulin

## Bike Tour Routes

Highway	From	To	Km	Miles	Surface
6	South Baymouth	Highway 542	13	8	Paved
542	Junction of Hwy 6	Mindemoya	27	16	Surface Treated
551	Mindemoya	M'Chigeeng	12	8	Paved
540	West Bay	Gore Bay	32	20	Paved
540	West Bay	Little Current	32	20	Paved
542/ 551	Mindemoya	Providence Bay	15	9	Surface Treated
542	Junction of 551	Junction of 540	27	17	Surface Treated
540	Gore Bay	Meldrum Bay	70	44	Surface Treated
Bidwell Rd.	Highway 6	Highway 540	32	20	Surface Treated

### Major Hills

- On Hwy 6 at Ten Mile Point, the hill going south is 1620m (5500 ft) long with a 5% grade.
- On Hwy 540, the east side of the West Bay hill is 900m (3000 ft) long with a 5% to 8% grade.
- Between M'Chigeeng and Kagawong there are four hills with an 8% grade of 300m (900 ft), 360m (100 ft), 423m (1200 ft), and 540m (1400 ft) respectively.

*Vehicle traffic is generally light, although ferry traffic along Hwy 6 can be heavy through June and July.*

The information in this directory has been gathered and carefully compiled in such a way as to ensure maximum accuracy. The Manitoulin Chamber of Commerce cannot, and does not, guarantee the accuracy of any information furnished to them nor the complete absence of errors and omissions; hence, no responsibility for the same can be, nor is assumed. The Manitoulin Chamber of Commerce feels that every effort has been taken to ensure that the information presented in this directory is correct.

# Trail Rides

## Honora Bay Riding Stable

Off Hwy 540, 18 km west of Little Current

(705)-368-0921

Honora Bay Riding Stable is a year round facility that offers guided trail rides, wagon rides, and riding lessons. Overnight rides are available, and there is a Summer Day Camp for children ages 8-15.

[www.hbrstable.com](http://www.hbrstable.com)

## Kicking Mule Ranch

Hwy 6 at Gauthier Road in Tehkummah, just 15 km north of the ferry

(705)-859-1234

Kicking Mule Ranch offers trail rides, wagon rides, cookouts, and is available for birthday parties. Overnight camping is offered, and there is also a Day Camp for children.

[www.kmr.manitoulin-island.com](http://www.kmr.manitoulin-island.com)



The information in this directory has been gathered and carefully compiled in such a way as to ensure maximum accuracy. The Manitoulin Chamber of Commerce cannot, and does not, guarantee the accuracy of any information furnished to them nor the complete absence of errors and omissions; hence, no responsibility for the same can be, nor is assumed. The Manitoulin Chamber of Commerce feels that every effort has been taken to ensure that the information presented in this directory is correct.

# Charters

## **Manitoulin Fishing & Yacht Charters**

### **Little Current**

Channel Fish n' Charters – Chuck Pinland – 705-368-2400

Manitoulin Fishing Adventures – Wayne Williamson – 705-368-3428

### **Meldrum Bay**

Meldrum Bay Inn – Ruben Larondeau – 705-283-3190

WhiteSea Cottages & Charters – Fred White – 705-283-3190

### **North Channel**

North Channel Charters – Rick Fogal – 705-282-2393

Northernaire Lodge – Clay Hester – 705-282-2642

### **South Baymouth**

Al-E Cat Charters – Al Clark – 705-282-2557

Manitou Fishing Charters – Bob Lewis – 705-859-2787

## **Manitoulin Yacht Charters**

### **Gore Bay**

Canadian Yacht Charters (CYC) – Ken Blodgett – 705-282-0185

### **Kagawong**

Maple Ridge Yacht Charters – Bob Ellen – 705-282-3330

### **Little Current**

Discovery Yacht Charters – John Smulders – 705-368-3744

The information in this directory has been gathered and carefully compiled in such a way as to ensure maximum accuracy. The Manitoulin Chamber of Commerce cannot, and does not, guarantee the accuracy of any information furnished to them nor the complete absence of errors and omissions; hence, no responsibility for the same can be, nor is assumed. The Manitoulin Chamber of Commerce feels that every effort has been taken to ensure that the information presented in this directory is correct.

# GOLF COURSES

## Brookwood Brae Golf Course

*Nine Holes, Par 36*

Off Hwy 551, R.R. 1  
359 Ketchankookem Trail  
Mindemoya, ON. P0P 1S0  
(705)-377-4979

## Manitoulin Island Country Club

*Nine Holes, Par 36*

2 km South from Hwy 540 and 542 intersection  
Gore Bay, ON. P0P 1H0  
(705)-282-2282

## Rainbow Ridge Golf Course

*Eighteen Holes, Par 72*

Off Wikwemikong Road  
26 B Clover Valley Road  
Manitowaning, ON. P0P 1N0  
(705)-859-2990

## Miniature Golf

### Gordon's Park

18777 Hwy 6  
Tehkummah P0P 2C0  
859-2470

The information in this directory has been gathered and carefully compiled in such a way as to ensure maximum accuracy. The Manitoulin Chamber of Commerce cannot, and does not, guarantee the accuracy of any information furnished to them nor the complete absence of errors and omissions; hence, no responsibility for the same can be, nor is assumed. The Manitoulin Chamber of Commerce feels that every effort has been taken to ensure that the information presented in this directory is correct.

**Updated May, 2007**

# Manitoulin Cemeteries

This is a list of cemeteries located on Manitoulin Island. In addition, there are some private cemeteries and burial grounds no longer in use. The oldest non-native cemetery is St. Paul's Anglican Cemetery in Manitowaning. Often during the early settlement, people were buried on the home farm because it was too difficult to reach a cemetery. The diphtheria epidemic of the early 1900s decimated the Island and victims were not allowed to be buried in public cemeteries. The stones commemorate the grief and hardships of the old settlers, such as men killed cutting logs or driving a runaway team, mothers dying in childbirth, and infants who didn't survive the winter and influenza epidemic.

## Assiginack Township

**Bidwell United Cemetery:** Lot 10, Con. 2 on Bidwell Road, approximately 3 km west on Monkhouse's Road. – 2 stones.

**Hilly Grove Cemetery:** Hwy 6 out of Manitowaning towards South Baymouth. – 10 ins.

**Hughson Family Cemetery:** Sheguiandah area, Springer Brook Road. – Stones grouped and fenced.

**Lockyer Family Cemetery:** Sheguiandah, Bidwell Road.

**St. Paul's Cemetery:** Manitowaning Town Plot, between Arthur and Spragge St., in the churchyard.

**Michael's Bay Cemetery**

## Sheguiandah

**Coldsprings Cemetery:** Hwy 540 near the Bidwell Road junction, beside the log chapel which was originally a Methodist church.

**Green Bay Cemetery:** On Bidwell Road, 1 km east of Green Bay Beach on the hilltop beside Green Bay United Church.

**Elmsview Cemetery:** On the Town Line Road in Sheguiandah.

**First Settlers Cemetery:** On Bidwell Road, Green Bay area.

## Sheguiandah First Nation

**Sheguiandah First Nation Cemetery**

## Sucker Creek First Nation

**Sucker Creek Cemetery**

## Little Current

**St. Bernard's Catholic Cemetery:** Beside the church.

**Mountainview Cemetery:** 2.5 km west of Little Current on Hwy 540.

**Holy Trinity Anglican Cemetery:** 1 km west of Little Current on Hwy 540.

## Wikwemikong Unceded Indian Reserve

**Holy Cross Mission Cemetery:** Wikwemikong Main Road beside the church. Missionaries from the 1640s are buried here as well as native residents.

**Veteran's Memorial Cemetery:** Wikwemikong Access Road.

## Billings - Kagawong Township

**Kagawong Cedars Cemetery:** Between the Park Centre and the Old Mill.

## M'Chigeeng First Nation

**West Bay Cemetery:** On Hwy 542.

**Immaculate Conception Cemetery:** Churchyard in downtown M'Chigeeng

## Central Manitoulin

**Mindemoya Cemetery:** Carnarvon Township near Treasure Trails Subdivision.

**Big Lake Cemetery:** Sandfield Township.

**Providence Bay Cemetery:** Carnarvon Township.

**Tehkummah Fairview Cemetery:** At the churchyard near junction of Hwy 542 and 6.

## Western Manitoulin

**Gordon Cemetery:** On Poplar Road.

**Mills-Burpee Cemetery:** Burpee Township.

**Obejewung Native Cemetery:** Just west of Indian Point Bridge with 1 pink granite marker.

**Long Bay Cemetery:** Campbell Township.

**Grimesthorpe Cemetery:** Sand Road in Campbell Township.

**Silver Water Cemetery:** Silver Lake area.

**Sheshegwaning Cemetery:** Sheshegwaning First Nation.

**Meldrum Bay Cemetery:** Lighthouse Road in Meldrum Bay.

# Local Information

# Municipalities

Municipality	Address	Telephone (705)	Fax
Assiginack	P.O. Box 238 Spragge Street Manitowaning, ON. P0P1N0	859-3196	859-3010
Barrie Island	P.O. Box 30 Gore Bay, ON. P0P 1H0	282-2991	
Billings	P.O. Box 34 Kagawong, ON. P0P 1J0	282-2611	282-3199
Burpee Mills	R.R. 1 Evansville, ON. P0P 1E0	282-0624	282-0624
Central Manitoulin	P.O. Box 187 6020 Hwy. 542 Mindemoya, ON. P0P 1S0	377-5726	377-5585
Cockburn Island	Walford, ON. P0P 2E0	844-2289	
Gordon	P.O. Box 120 Gore Bay, ON. P0P 1H0	282-2702	282-2702
Town of Gore Bay	P.O. Box 590 15 Water Street Gore Bay, ON. P0P 1H0	282-2420	282-3076
Town of N.E.M.I	Postal Bag 2000 50 Meredith Street West Little Current, ON. P0P1K0	368-3500	368-2245
Tehkummah	Tehkummah, ON. P0P 2C0	859-3293	859-2605

The information in this directory has been gathered and carefully compiled in such a way as to ensure maximum accuracy. The Manitoulin Chamber of Commerce cannot, and does not, guarantee the accuracy of any information furnished to them nor the complete absence of errors and omissions; hence, no responsibility for the same can be, nor is assumed. The Manitoulin Chamber of Commerce feels that every effort has been taken to ensure that the information presented in this directory is correct.

Updated May, 2007

# Manitoulin Island & Area First Nations

First Nation	Mailing Address	Telephone (705)	Fax
Aundeck Omni Kaning First Nation	R.R. 1, Box 21 Little Current, ON. P0P 1K0	368-2228	368-2182
M'Chigeeng First Nation	P.O. Box 333 M'Chigeeng, ON. P0P 1G0	377-5363	377-4980
Sheguiandah First Nation	P.O. Box 101 Sheguiandah, ON. P0P 1W0	368-2781	368-3697
Sheshegwaning First Nation	General Delivery Silverwater, ON. P0P 1X0	283-3292	283-3481
Zhiibaahaasing First Nation	General Delivery Silverwater, ON. P0P 1Y0	283-3963	283-3964
Wiwemikong Unceded Indian Reserve	General Delivery Wiwemikong, ON. P0P 2J0	859-3122	859-3851
Whitefish River First Nation	General Delivery Birch Island, ON. P0P 1A0	285-4335	285-4532
United Chiefs and Councils of Manitoulin (UCCM)	P.O. Box 275 M'Chigeeng ON. P0P 1G0	377-5307	377-5309

The information in this directory has been gathered and carefully compiled in such a way as to ensure maximum accuracy. The Manitoulin Chamber of Commerce cannot, and does not, guarantee the accuracy of any information furnished to them nor the complete absence of errors and omissions; hence, no responsibility for the same can be, nor is assumed. The Manitoulin Chamber of Commerce feels that every effort has been taken to ensure that the information presented in this directory is correct.

Updated May, 2007

# The Little Current Swing Bridge

## *Information:*

- The bridge swings on the hour, every hour, for 20 minutes, dawn till dusk.
- The bridge operates from May 15<sup>th</sup> – October 28<sup>th</sup>.
- It is Channel 14 on marine radio.
- During the season, their phone number is 705-368-2969, from 6 am to 10 pm.
- During the off season they can be contacted through 705-368-2727.

## **History**

The swing bridge was built in 1913 to link Little Current with the rest of Northern Ontario. It was built for the Algoma Eastern Railway. The founder of the bridge was Francis Clergue. The bridge was designed and built by the Canadian Bridge Company of Walkerville, Ontario. It cost \$285,000 to build. On November 11<sup>th</sup>, 1913, the bridge swung for the very first time.

There was a 24 horsepower motor installed in the bridge when it was first built. In an emergency where the motor couldn't run, it would take 8 men 20 minutes to turn the capstan to close the bridge.

When the bridge was first built it was put together with bolts and rivets. There was no hydro, so all of the lights on the bridge were coal-oil lamps.

Originally, the bridge stayed open, swinging closed only when a train neared the Little Current Station, so that the busy shipping lanes through the North Channel could remain open.

After World War Two, in 1945 the bridge was modified for both rail and road. At this time it was covered with a new deck of 5x8 inch creosoted British Columbia Fir planking. During the 1980s, rail traffic ceased entirely. The ministry of Transportation & Communication acquired the bridge in 1982, when it was modified for highway use only. In 1985, longitudinally laminated wood replaced the railway track and deck plating.

The bridge clearance is 14 feet wide and 22 feet high. The length of the swing part is 325 feet and the total length from end to end is 574 feet. Everything is operated from up in the tower. The operator is assisted by mirrors placed at an angle in certain places.

The Little Current swing bridge was one of the first to be listed in the Ontario Heritage Bridge program in 1983.

- The bridge offers the only land route to and from Manitoulin Island.
- Today, most visitors cross the town's most famous landmark: the swing bridge. Now the bridge stays in the closed position except for about 15 minutes on the hour, from dawn to dusk during the summer to let boats pass through the channel.
- The bridge stands as a rare survivor with much of its mechanisms remaining in working order despite its conversion from rail to road.
- The original bearing is on display in the Manitoulin Information Centre in Little Current.

# Towns of Manitoulin

## **Aundeck Omni Kaning (*Sucker Creek*)**

*("Where the crow lives")*

Located along Highway 540 is the Ojibwe community of Aundeck Omni Kaning. Known previously as Sucker Creek, this Reserve returned to its old name in 2001. Aundeck Omni Kaning is a member of the Great Spirit Circle Trail, and is home to the Endaa-aang Tourism. The community's Administration Building displays works by local artists, as well as houses the Band Offices and Community Hall.

## **Evansville**

Along Highway 540 is the town of Evansville, which is a part of the Township of Burpee-Mills. Located by both Lake Wolsey and Campbell Bay, Evansville has docks and boat launches. The Complex houses the Community Hall, gym, outdoor arena, and Municipal Office. There are baseball diamonds and picnic areas as well. Evansville is also near both the Misery Bay Provincial Conservation Reserve and Mac's Bay Provincial Conservation Reserve.

## **Gore Bay**

Located on the North Channel of Lake Huron, Gore Bay was incorporated in 1890 and is the second largest community on the Island. It is the Judicial Seat of Manitoulin, having both the Courthouse and Registry Office located there. It is thought that the town's name may have come from a steamship called the "Gore" which was trapped in the bay during a winter storm, or possibly because of the tapering gore which runs inland. The boardwalks that run along the Marina and Waterfront Area offer a great tour of the lakeshore. The Manitoulin Farmers' Market is held on Fridays at the arena in the summer. There is a public beach, 2 tennis courts, a playground, and golf course. There is also the museum and the Gore Bay Summer Theatre.

## **Kagawong**

*("Where mists rise from the falling waters")*

Off Highway 540, the village of Kagawong is a part of the Township of Billings. There are several historic buildings, such as the Lighthouse and the old Mill, which contains the Municipal Office, a recreation facility, and an art studio. There are 2 sand beaches, a ball field, a tennis court, a basketball court. The Park Centre has a skateboard park, cedar maze and stone maze. Kagawong is famous for its fishing, and is also home to Bridal Veil Falls and the Kagawong River Trail.

The information in this guide has been gathered and carefully compiled in such a way as to ensure maximum accuracy. The Manitoulin Chamber of Commerce cannot, and does not, guarantee the accuracy of any information furnished to them nor the complete absence of errors and omissions; hence, no responsibility for the same can be, nor is assumed. The Manitoulin Chamber of Commerce feels that every effort has been taken to ensure that the information presented in this guide is correct.

## **Little Current**

Located on Highway 6, Little Current's historic swing bridge provides the only road access to Manitoulin and is one of the two main entrance points to the Island. Settled in 1860s, The Port of Little Current has three marinas. It is also home to the Manitoulin Health Centre Hospital, Municipal Office, Public Library, Recreation Centre, and the large Tourist Information & Welcoming Centre. There is also the Waterfront Park with its boardwalk and the local cenotaph, as well as the Low Island Park, which has a beach, baseball diamond, soccer field, and playground. On Tuesdays during the summer, the Manitoulin Farmers' Market is held at the Rec Center. Every Civic Holiday weekend in August is the famous Haweater Weekend.

## **Manitowaning**

*("Den of the Great Spirit")*

Located on the eastern end of Manitoulin Island along Highway 6, Manitowaning was the first European settlement on the Island and is a part of the Township of Assiginack. In 1832, the "Manitoulin Treaty" was signed, opening most of the land to European settlement. The Township of Assiginack was incorporated in 1871. Manitowaning has 3 swimming beaches at South Bay, Manitowaning Bay and Lake Manitou, a full service marina, a public library, a skate park, and a medical and dental clinic. Inside of town there is a historical lighthouse built in 1878, the Assiginack Museum Complex and Heritage Park which includes The Roller Mill, Burns Wharf Theatre, and the steamship The S.S. Norisle. St. Paul's Anglican, the oldest Church in Northern Ontario, which was built in 1845, is located in Manitowaning. There is also a CAP Public Internet Access Site.

## **M'Chigeeng**

*("Place of the fish harpoon")*

Located where Highway 540 and Highway 551 meet is the First Nation of M'Chigeeng, settled in the early 1800s. The Ojibwe Cultural Foundation is found in M'Chigeeng, and houses a museum, art gallery, and store. It also offers craft workshops, storytelling, and dance exhibitions. There are several art galleries and craft stores in town as well. M'Chigeeng is also a member of the Great Spirit Circle Trail. The Cup & Saucer Hiking Trail and M'Chigeeng Hiking Trail are popular destinations.

## **Meldrum Bay**

Located at the end of Highway 540, Meldrum Bay is a part of the Township of Dawson. Settled in the 1870s, it is the most westerly located town on Manitoulin Island. The village is home to the historic Mississagi Lighthouse, built in 1873, and the Netshed Museum which houses the farming, fishing, and lumber cutting history of Meldrum Bay. There is also the marina, campground, museum, and Provincial Park, as well as charter businesses.

The information in this guide has been gathered and carefully compiled in such a way as to ensure maximum accuracy. The Manitoulin Chamber of Commerce cannot, and does not, guarantee the accuracy of any information furnished to them nor the complete absence of errors and omissions; hence, no responsibility for the same can be, nor is assumed. The Manitoulin Chamber of Commerce feels that every effort has been taken to ensure that the information presented in this guide is correct.

## **Mindemoya**

*(“The old woman”)*

Located on Highway 551, the town of Mindemoya is a part of the Township of Central Manitoulin and is the commercial center of the Island. It is home to the Municipal Office, public library, 2 museums, the veterinary clinics, and the Manitoulin Health Centre. The Manitoulin Farmers’ Market is hosted at the arena on Saturdays in the summer. There are 2 beaches located on Lake Mindemoya, a community hall, a baseball diamond, and tennis courts.

## **Providence Bay**

*(Once ‘Bebekodawangog’ - “Where the beach curves around the water”)*

Located on Highway 551, Providence Bay is a town that developed around the early pine industry in the area. It has the longest public sand beach on the Island, which is a popular destination, as well as the Harbour View Centre with its shop, boardwalk, and interpretive displays. There is also the marina, arena, library, and baseball diamond located in town.

## **Sandfield**

Located along Highway 542, the community of Sandfield is part of the Township of Central Manitoulin. The Manitou River runs through it. There is a boat launch to Lake Manitou, a community hall, and the Lake Manitou Dam and Picnic Area.

## **Sheguiandah**

*(“Home of the stork”, “Place of the Grindstone”, “Home of Sequin”, “Bay of great slate”)*

Located along Highway 6, the area of Sheguiandah is made of the Hamlet of Sheguiandah, which was settled in the 1870s, and the Sheguiandah Reserve First Nation, which was established by Treaty in 1866. Archaeological evidence has dated artifacts from the area to be over 9,500 years old, marking it among the oldest known Paleo-Indian habitation sites in North America. As such, a large portion of the Hamlet is protected under an Act of the Government of Ontario. The town is home to the Centennial Museum, which has displays of many artifacts from the region, as well as a picnic area and playground. There is also a beach, and a dock with boat launch. Sheguiandah First nation is a member of the Great Spirit Circle Trail.

## **Sheshegwaning and Zhiibaahaasing**

*(“Place of the rattlesnake”)*

Located off Highway 540 on the west end of Manitoulin Island is Sheshegwaning First Nation. Sheshegwaning is home to Nimkee’s Hiking Trails. Entered through Sheshegwaning, Zhiibaahaasing First Nation is home to the world's largest outdoor dream catcher, peace pipe, and drum. Both Sheshegwaning and Zhiibaahaasing are members of the Great Spirit Circle Trail

The information in this guide has been gathered and carefully compiled in such a way as to ensure maximum accuracy. The Manitoulin Chamber of Commerce cannot, and does not, guarantee the accuracy of any information furnished to them nor the complete absence of errors and omissions; hence, no responsibility for the same can be, nor is assumed. The Manitoulin Chamber of Commerce feels that every effort has been taken to ensure that the information presented in this guide is correct.

## **Silver Water**

Found along Highway 540, the community of Silver Water was settled in the 1870s. Silver Water has a Community Hall, fire hall, restaurant, and dock with a boat launch. There is an annual July 1<sup>st</sup> picnic on Canada Day.

## **South Baymouth**

(Once 'Sagradawawong' – "The outlet")

Located on Highway 6, South Baymouth is the northern docking point for the M.S. Chi-Cheemaun ferry service which has been running since 1932, making one of the two main entrance points to Manitoulin Island. The ferry runs from May to October, and during the high season, from the end of June until September, the ferry makes four round trips a day. The town has a marina, as well as a nearby lighthouse, boardwalk, and museum. There are also several gift shops, an art gallery, picnic areas, and a park for camping.

## **Spring Bay**

Located on Highway 542, Spring Bay is part of the Township of Central Manitoulin. There are boat launches to both Lake Mindemoya and Lake Kagawong, as well as a baseball diamond and community hall.

## **Tehkummah**

("Ray of light flashing in the sky")

Found along Highway 6 and Highway 542 is the village of Tehkummah. The town has a municipal office, public library, general store, baseball diamond, and community center. Nearby Michael's Bay was the first European settlement in the Township of Tehkummah. It burned down in 1914, never to be rebuilt, and is now a ghost town that is being researched by the Michael's Bay Historical Society.

## **Wikwemikong**

*("Bay of the beaver", "Bay with a gravel bottom", "Town built on a curving hillside over a beautiful bay")*

Found on the west end of Manitoulin Island is Wikwemikong, the Island's largest community. In 1862, Wikwemikong refused to sign the Manitoulin Treaty, and having never given up the title or ownership of its land by either treaty or sale, it remains as the only officially recognized Unceded Indian Reserve in Canada. The Holy Cross Mission Ruins are found in the town of Wikwemikong. It is also home to many local artists, as well as the De-ba-jeh-mu-jig Theatre Group. Wikwemikong is a member of the Great Spirit Circle Trail, and has hiking, cycling, and canoeing trails.

The information in this guide has been gathered and carefully compiled in such a way as to ensure maximum accuracy. The Manitoulin Chamber of Commerce cannot, and does not, guarantee the accuracy of any information furnished to them nor the complete absence of errors and omissions; hence, no responsibility for the same can be, nor is assumed. The Manitoulin Chamber of Commerce feels that every effort has been taken to ensure that the information presented in this guide is correct.